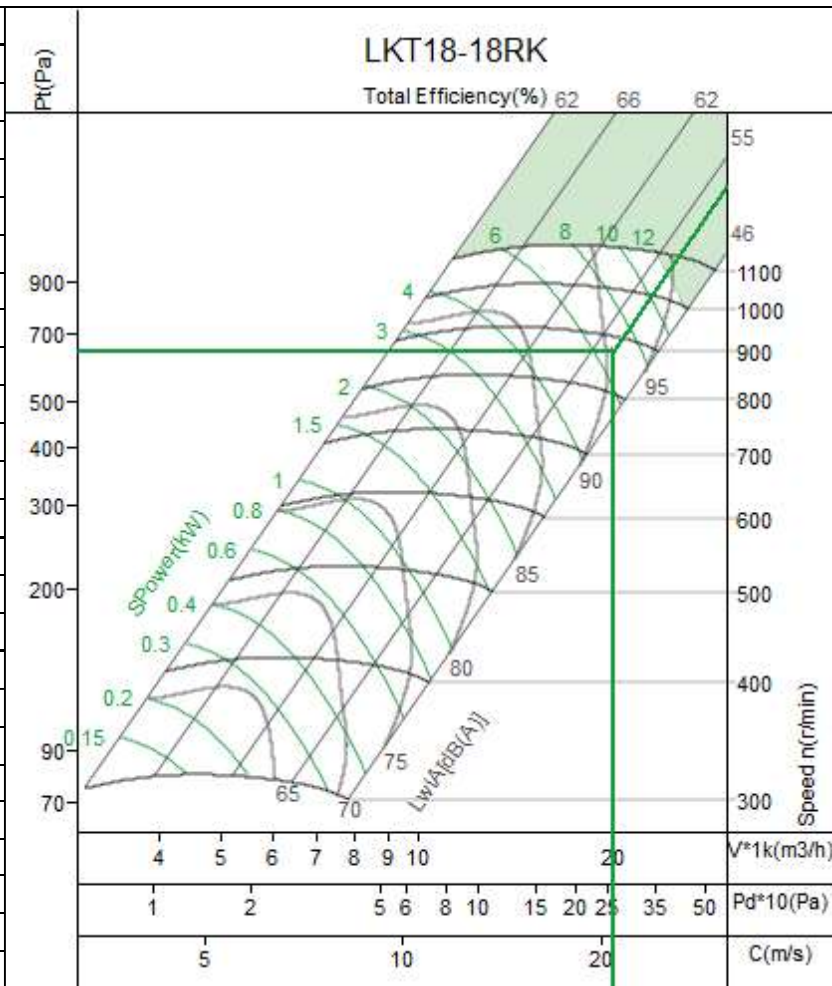


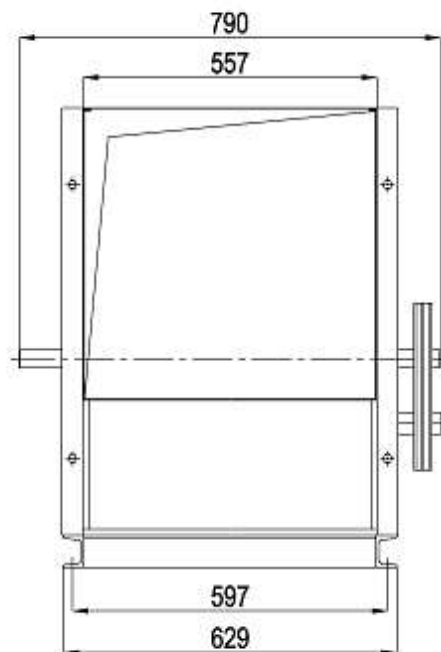
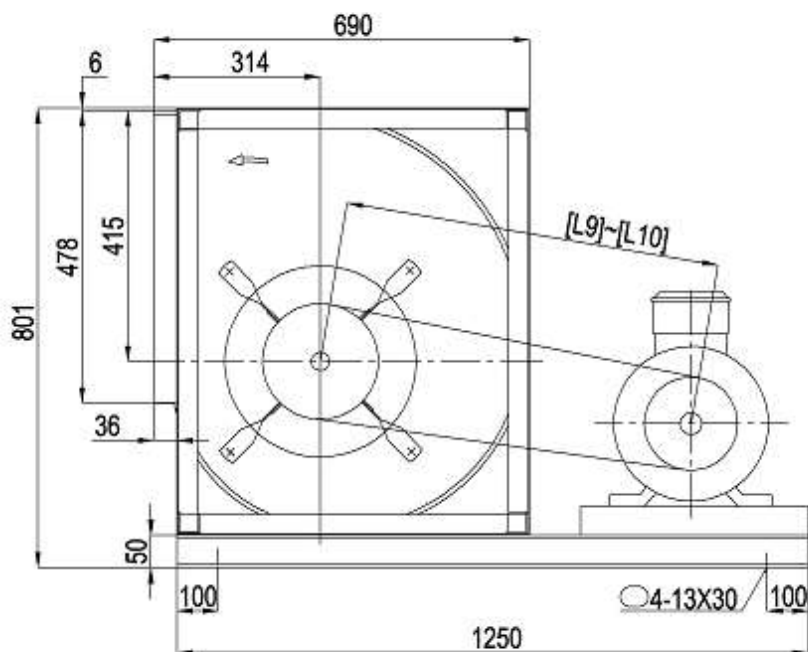


No.:1	Equipment No.:
Project Name:Untitled	
Date:2024-11-18	
Remarks:	

Input Parameters	
Air Volume	20000 m3/h
Input S.P.	375 Pa
Fan Parameters	
Type	LKT18-18RK
Air Volume	20000 m3/h
Total Pressure	636 Pa
Static Pressure	375 Pa
Dynamic Pressure	261 Pa
Outlet Velocity	20.87 m/s
Total Efficiency	52.4 %
Fan Speed	873 r/min
Shaft Power	6.75 kw
Motor Parameters	
Motor Power/Pole	11/4
Motor Speed	1465 r/min
Elec Supply V/Ph/Hz	380/3/50
Belt/Pulley	
Fan Pulley/Bush/Shaft	
Motor Pulley/Bush/Shaft	
Belt Model * qty	
Belt Length/Belt Speed	
Bearing life L10/L50 (h)	h
Machine Parameters	
Total Weight	186.1 kg



Limiting Parameters		Noise									
Max. Fan Speed	1100 r/min	HZ	63	125	250	500	1k	2k	4k	8k	Overall
Max. Absorbed Power	12 kw	Lw	86	89	85	89	85	85	81	77	95
Temperature(Min-Max)	-20~85 jæ	Lw(A)	60	73	77	86	85	86	82	76	91
Max. Bearing Load	25600 N	LpA	52	65	69	78	77	78	74	68	83



Fan Section

PRE FILTER



model	Overall dimensions (MM)							
	A	B	C	D	e1	e2	a1	a2
AT 18-18	1400	1200	1500	100	1020	430	560	480

