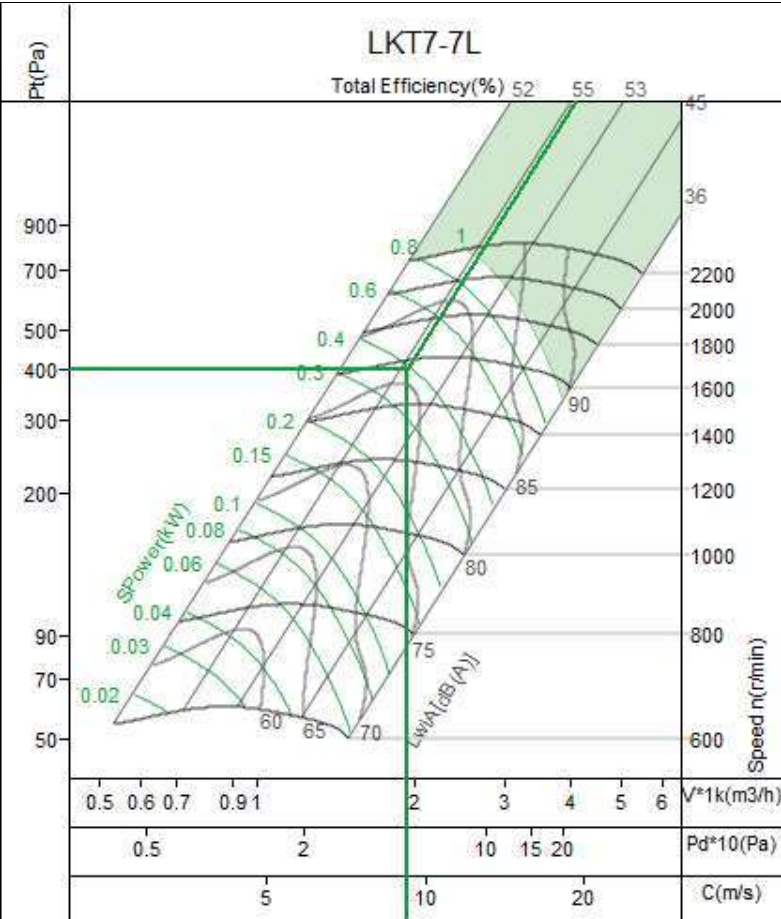


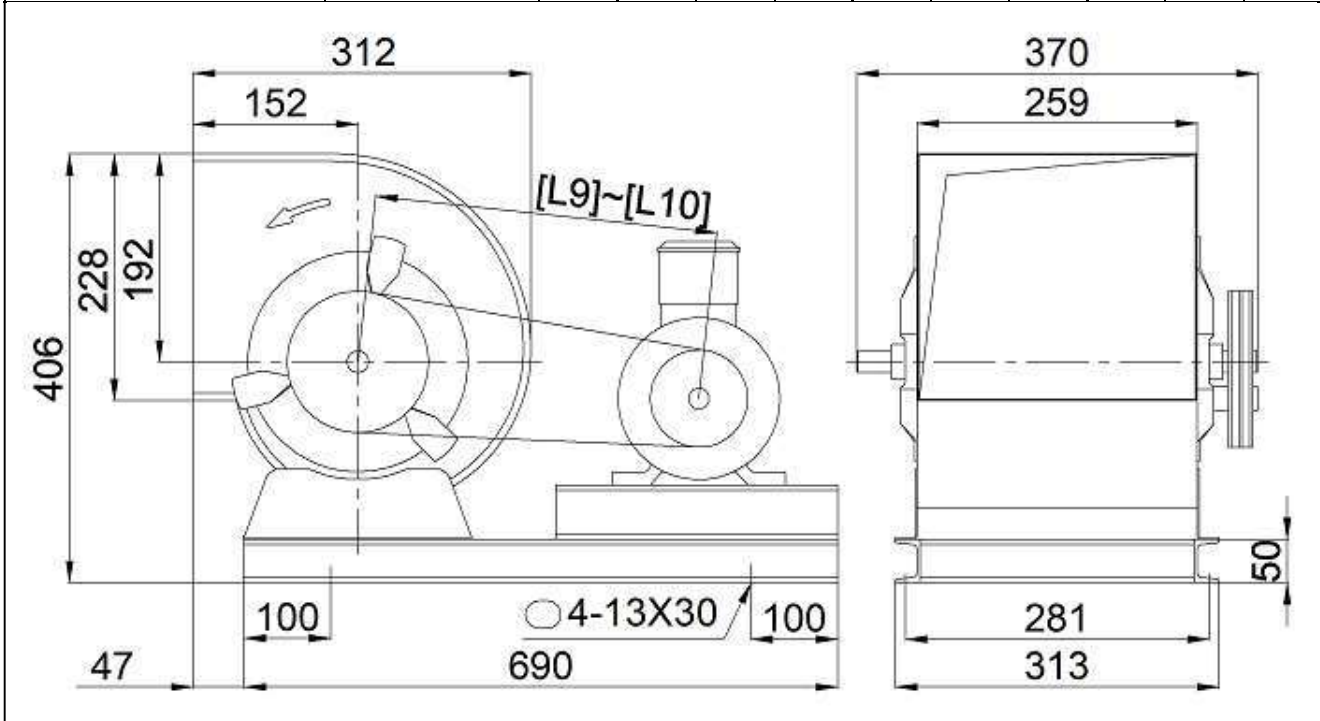


No.: 1      Equipment No.:  
 Project Name: Untitled  
 Date: 2024-11-18  
 Remarks:

Input Parameters	
Air Volume	1950 m3/h
Input T.P.	400 Pa
Fan Parameters	
Type	LKT7-7L
Air Volume	1950 m3/h
Total Pressure	400 Pa
Static Pressure	350 Pa
Dynamic Pressure	50 Pa
Outlet Velocity	9.17 m/s
Total Efficiency	55 %
Fan Speed	1560 r/min
Shaft Power	0.39 kw
Motor Parameters	
Motor Power/Pole	0.55/4
Motor Speed	1390 r/min
Elec Supply V/Ph/Hz	380/3/50
Belt/Pulley	
Fan Pulley/Bush/Shaft	
Motor Pulley/Bush/Shaft	
Belt Model * qty	
Belt Length/Belt Speed	
Bearing life L10/L50 (h)	h
Machine Parameters	
Total Weight	26.3 kg



Limiting Parameters		Noise									
Max. Fan Speed	2200 r/min	HZ	63	125	250	500	1k	2k	4k	8k	Overall
Max. Absorbed Power	1 kw	Lw	78	80	77	73	71	67	65	60	84
Temperature (Min-Max)	-20~85 jæ	Lw(A)	52	64	69	70	71	68	66	59	76
Max. Bearing Load	12900 N	LpA	44	56	61	62	63	60	58	51	68



## Fan Section

**PRE FILTER**



model	Overall dimensions (MM)							
	A	B	C	D	e1	e2	a1	a2
AT 7-7	750	700	90	100	520	180	230	210

