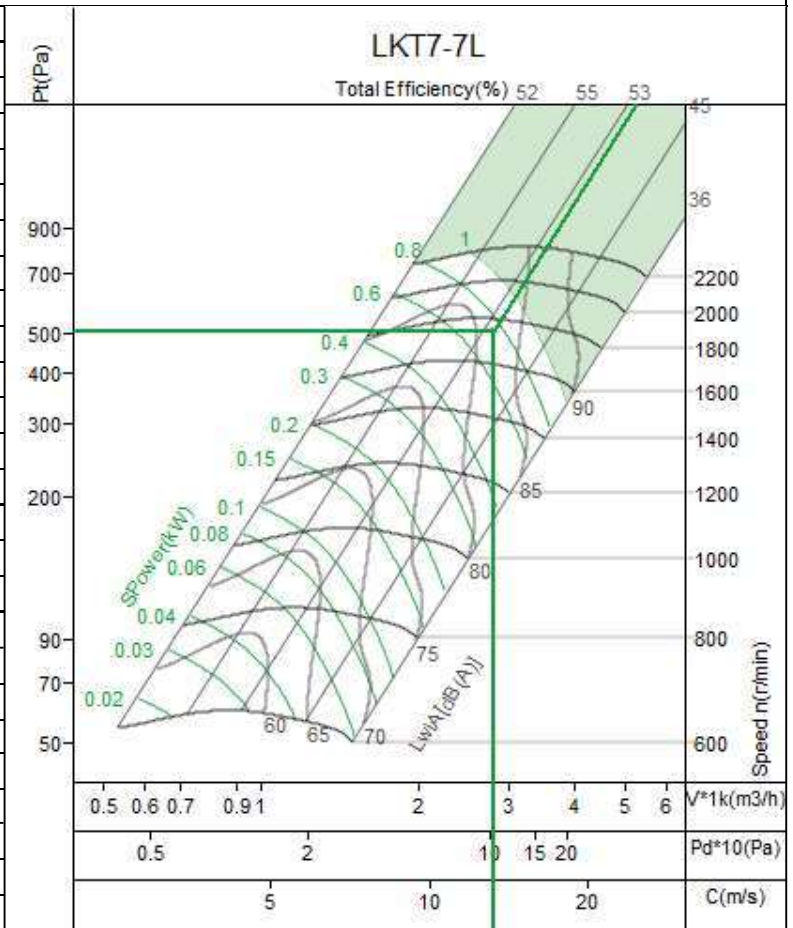




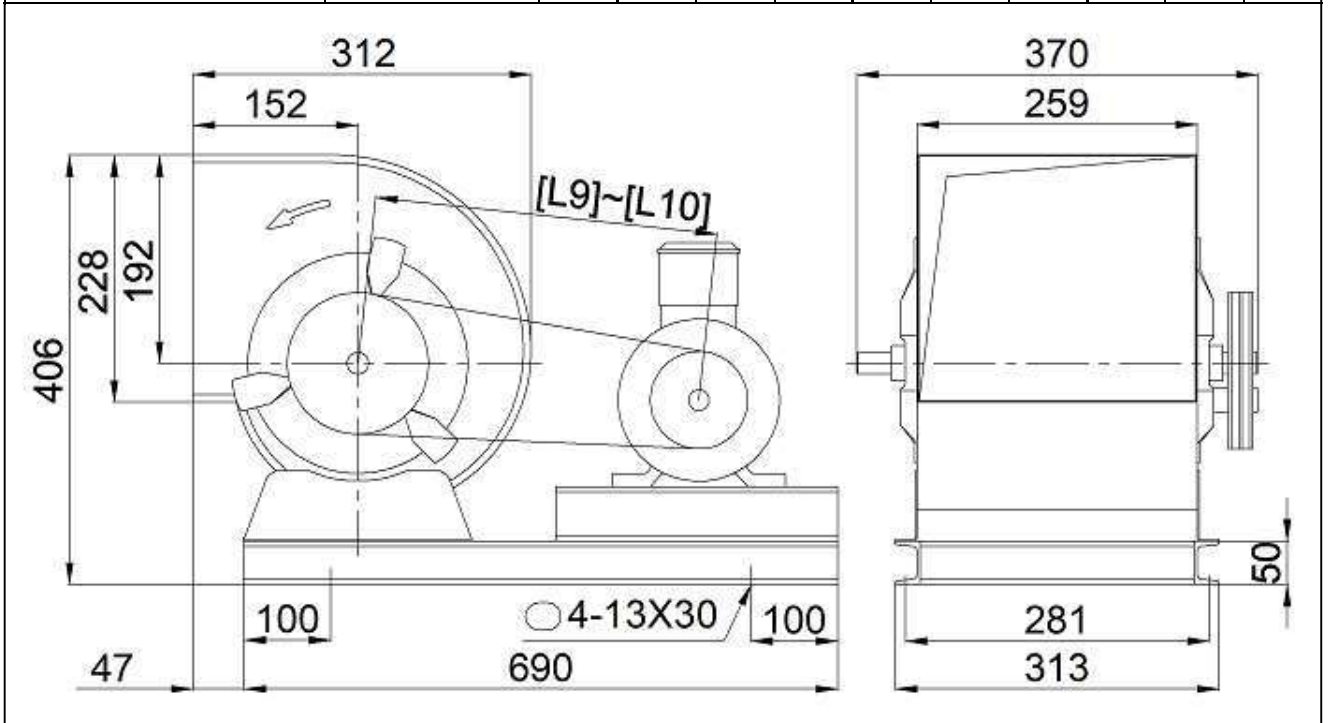
No.:1
 Project Name:Untitled
 Date:2024-11-18
 Remarks:

Equipment No.:

Input Parameters	
Air Volume	2800 m3/h
Input S.P.	400 Pa
Fan Parameters	
Type	LKT7-7L
Air Volume	2800 m3/h
Total Pressure	504 Pa
Static Pressure	400 Pa
Dynamic Pressure	104 Pa
Outlet Velocity	13.17 m/s
Total Efficiency	52.2 %
Fan Speed	1745 r/min
Shaft Power	0.75 kw
Motor Parameters	
Motor Power/Pole	1.1/4
Motor Speed	1445 r/min
Elec Supply V/Ph/Hz	380/3/50
Belt/Pulley	
Fan Pulley/Bush/Shaft	
Motor Pulley/Bush/Shaft	
Belt Model * qty	
Belt Length/Belt Speed	
Bearing life L10/L50 (h)	h
Machine Parameters	
Total Weight	34.3 kg



Limiting Parameters		Noise									
Max. Fan Speed	2200 r/min	HZ	63	125	250	500	1k	2k	4k	8k	Overall
Max. Absorbed Power	1 kw	Lw	81	84	81	79	77	73	72	68	88
Temperature (Min-Max)	-20~85 jæ	Lw(A)	55	68	72	76	77	75	73	67	82
Max. Bearing Load	12900 N	LpA	47	60	64	68	69	67	65	59	74



Fan Section

PRE FILTER
BAG FILTER



model	Overall dimensions (MM)							
	A	B	C	D	e1	e2	a1	a2
AT 7-7	95	70	1450	100	520	180	230	210

