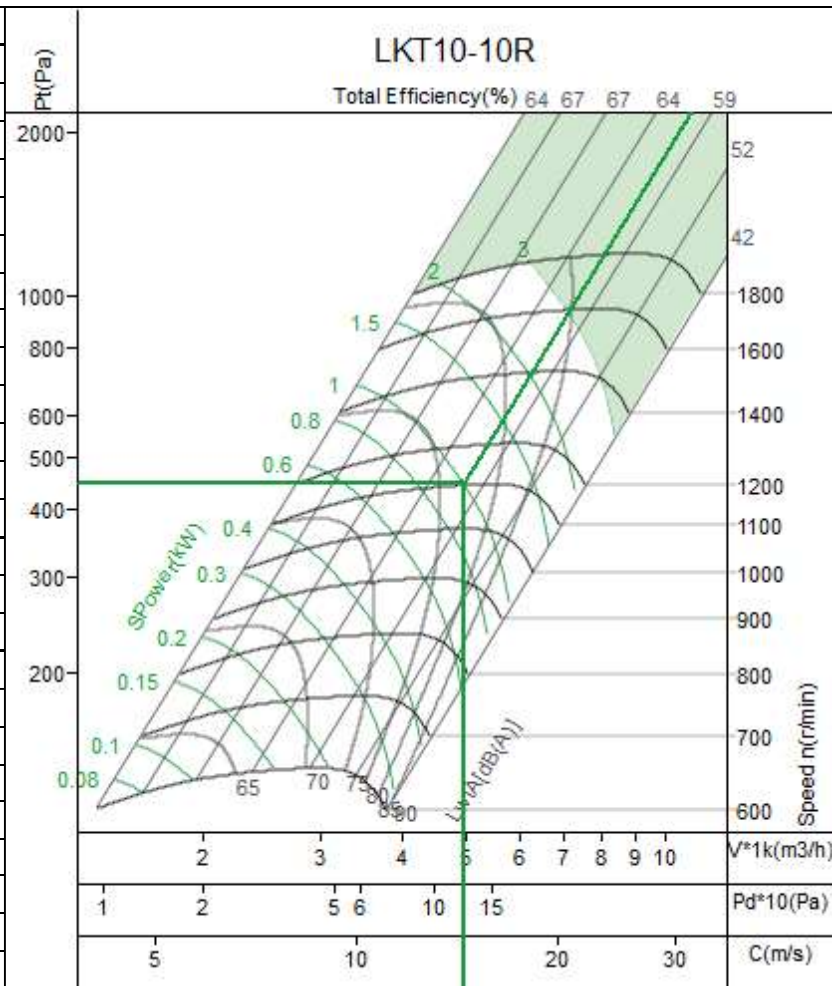


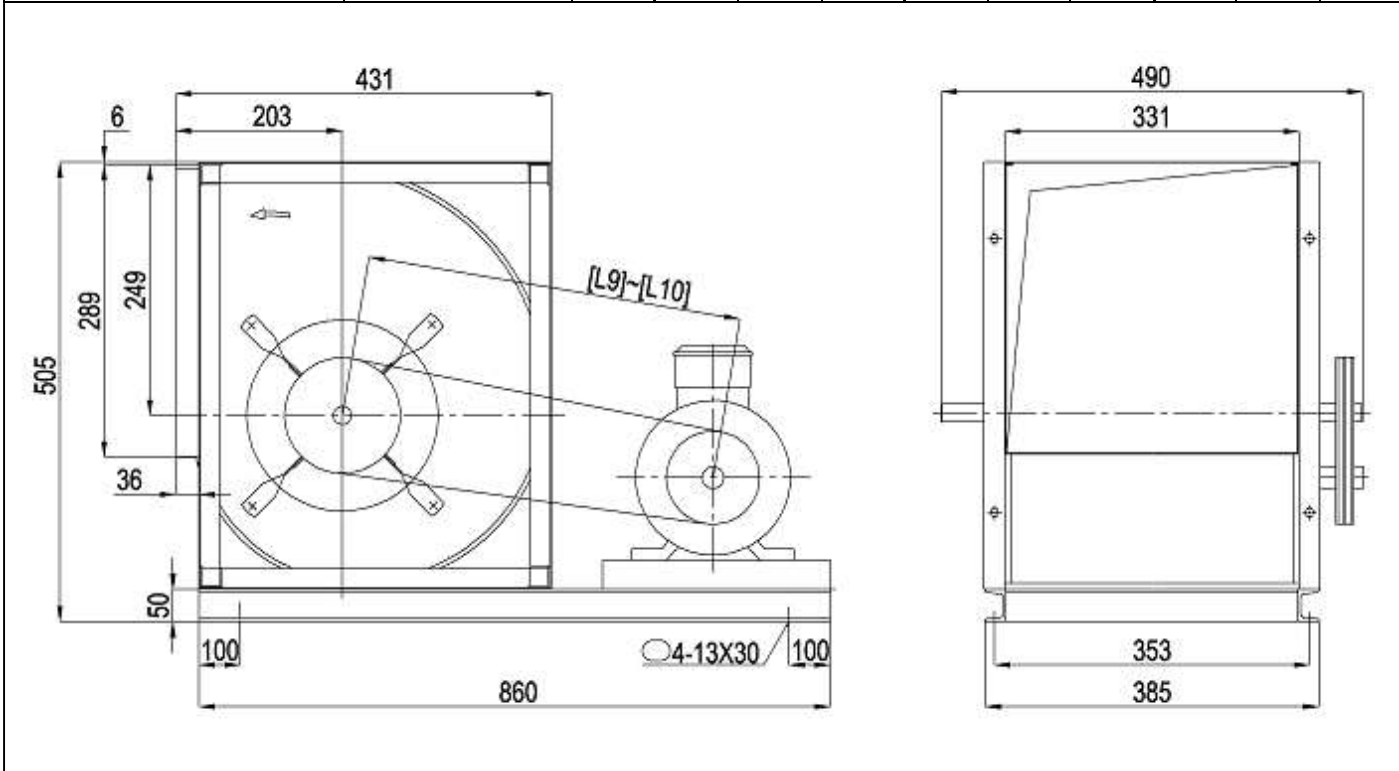


No.:1	Equipment No.:
Project Name:Untitled	
Date:2024-11-18	
Remarks:	

Input Parameters	
Air Volume	4950 m3/h
Input S.P.	325 Pa
Fan Parameters	
Type	LKT10-10R
Air Volume	4950 m3/h
Total Pressure	449 Pa
Static Pressure	325 Pa
Dynamic Pressure	124 Pa
Outlet Velocity	14.37 m/s
Total Efficiency	61.2 %
Fan Speed	1107 r/min
Shaft Power	1.01 kw
Motor Parameters	
Motor Power/Pole	1.5/4
Motor Speed	1445 r/min
Elec Supply V/Ph/Hz	380/3/50
Belt/Pulley	
Fan Pulley/Bush/Shaft	
Motor Pulley/Bush/Shaft	
Belt Model * qty	
Belt Length/Belt Speed	
Bearing life L10/L50 (h)	h
Machine Parameters	
Total Weight	47.5 kg



Limiting Parameters		Noise									
Max. Fan Speed	1800 r/min	HZ	63	125	250	500	1k	2k	4k	8k	Overall
Max. Absorbed Power	3 kw	Lw	75	78	76	75	77	75	74	70	84
Temperature(Min-Max)	-20~85 jæ	Lw(A)	48	62	68	72	77	77	75	69	82
Max. Bearing Load	14000 N	LpA	40	54	60	64	69	69	67	61	74



Fan Section

PRE FILTER



model	Overall dimensions (MM)							
	A	B	C	D	e1	e2	a1	a2
AT 10-10	950	800	1220	100	720	280	330	290

