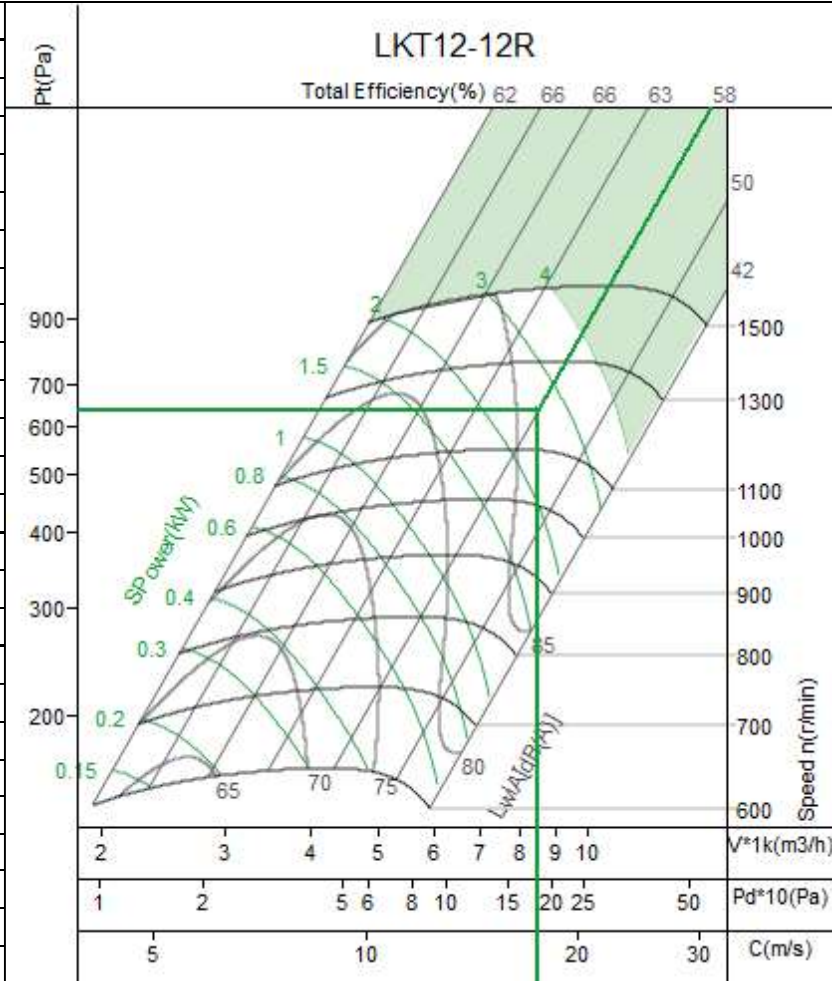


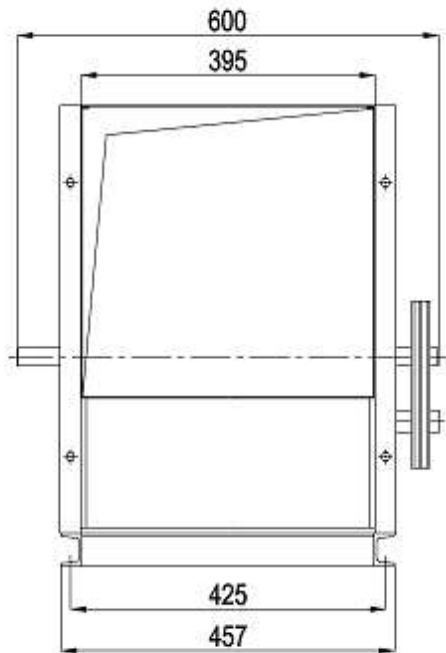
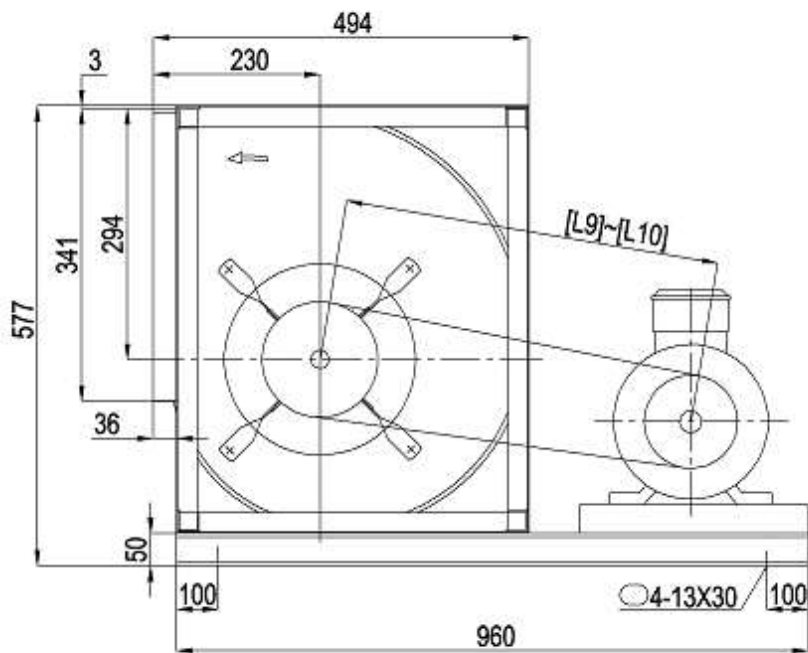


No.:1	Equipment No.:
Project Name:Untitled	
Date:2024-11-18	
Remarks:	

Input Parameters	
Air Volume	8500 m3/h
Input S.P.	450 Pa
Fan Parameters	
Type	LKT12-12R
Air Volume	8500 m3/h
Total Pressure	634 Pa
Static Pressure	450 Pa
Dynamic Pressure	184 Pa
Outlet Velocity	17.53 m/s
Total Efficiency	58.1 %
Fan Speed	1185 r/min
Shaft Power	2.58 kw
Motor Parameters	
Motor Power/Pole	3/4
Motor Speed	1435 r/min
Elec Supply V/Ph/Hz	380/3/50
Belt/Pulley	
Fan Pulley/Bush/Shaft	
Motor Pulley/Bush/Shaft	
Belt Model * qty	
Belt Length/Belt Speed	
Bearing life L10/L50 (h)	h
Machine Parameters	
Total Weight	67.6 kg



Limiting Parameters		Noise									
Max. Fan Speed	1500 r/min	HZ	63	125	250	500	1k	2k	4k	8k	Overall
Max. Absorbed Power	4 kw	Lw	80	83	81	82	81	80	79	74	90
Temperature(Min-Max)	-20~85 jæ	Lw(A)	54	67	72	79	81	82	80	73	87
Max. Bearing Load	14000 N	LpA	46	59	64	71	73	74	72	65	79



Fan Section

PRE FILTER



model	Overall dimensions (MM)							
	A	B	C	D	e1	e2	a1	a2
AT 12-12	950	950	1400	100	820	330	400	340

