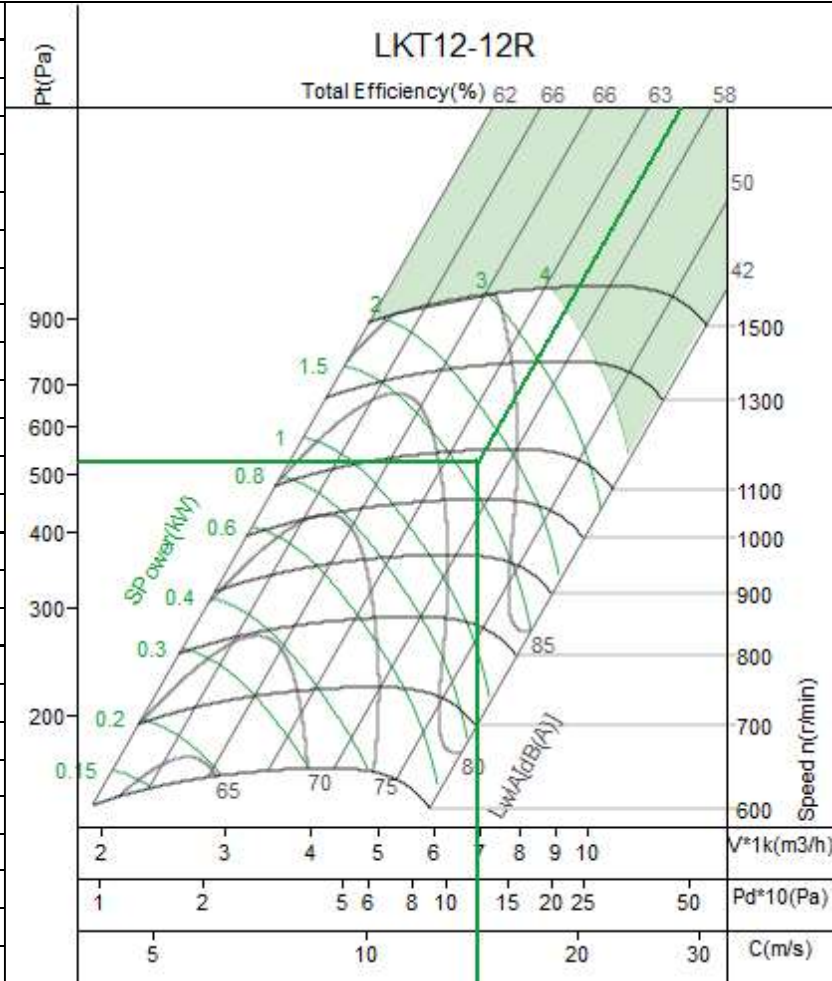


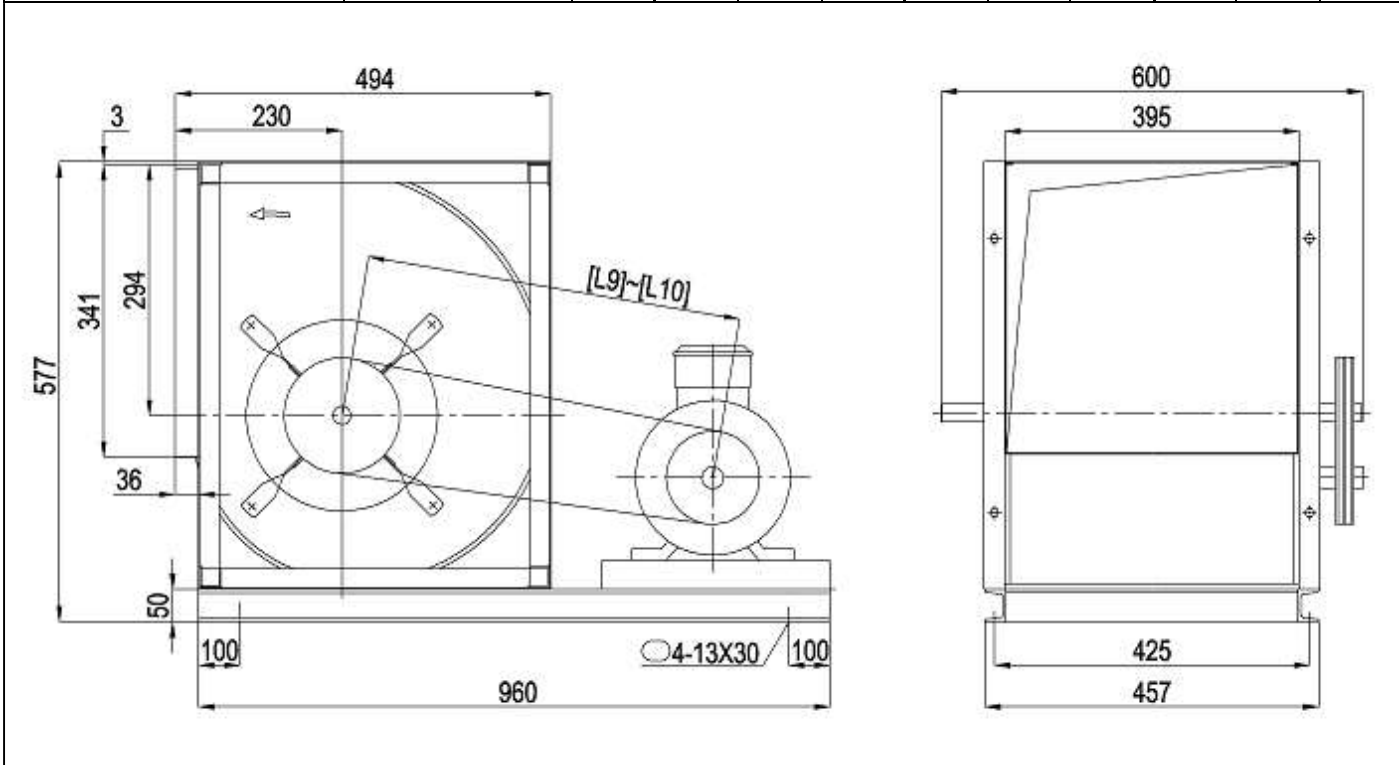


| | |
|-----------------------|----------------|
| No.:1 | Equipment No.: |
| Project Name:Untitled | |
| Date:2024-11-18 | |
| Remarks: | |

| Input Parameters | |
|--------------------------|------------|
| Air Volume | 6950 m3/h |
| Input S.P. | 400 Pa |
| Fan Parameters | |
| Type | LKT12-12R |
| Air Volume | 6950 m3/h |
| Total Pressure | 523 Pa |
| Static Pressure | 400 Pa |
| Dynamic Pressure | 123 Pa |
| Outlet Velocity | 14.33 m/s |
| Total Efficiency | 60.7 % |
| Fan Speed | 1078 r/min |
| Shaft Power | 1.66 kw |
| Motor Parameters | |
| Motor Power/Pole | 2.2/4 |
| Motor Speed | 1435 r/min |
| Elec Supply V/Ph/Hz | 380/3/50 |
| Belt/Pulley | |
| Fan Pulley/Bush/Shaft | |
| Motor Pulley/Bush/Shaft | |
| Belt Model * qty | |
| Belt Length/Belt Speed | |
| Bearing life L10/L50 (h) | h |
| Machine Parameters | |
| Total Weight | 65.6 kg |



| Limiting Parameters | | Noise | | | | | | | | | |
|----------------------|------------|-------|----|-----|-----|-----|----|----|----|----|---------|
| Max. Fan Speed | 1500 r/min | HZ | 63 | 125 | 250 | 500 | 1k | 2k | 4k | 8k | Overall |
| Max. Absorbed Power | 4 kw | Lw | 77 | 80 | 78 | 78 | 77 | 76 | 74 | 69 | 86 |
| Temperature(Min-Max) | -20~85 jæ | Lw(A) | 51 | 64 | 69 | 75 | 77 | 78 | 75 | 68 | 83 |
| Max. Bearing Load | 14000 N | LpA | 43 | 56 | 61 | 67 | 69 | 70 | 67 | 60 | 75 |



1 FAN SECTION

Fan Section

PRE FILTER
BAG FILTER



| model | Overall dimensions (MM) | | | | | | | |
|----------|-------------------------|-----|------|-----|-----|-----|-----|-----|
| | A | B | C | D | e1 | e2 | a1 | a2 |
| AT 12-12 | 950 | 950 | 1750 | 100 | 820 | 330 | 400 | 340 |

