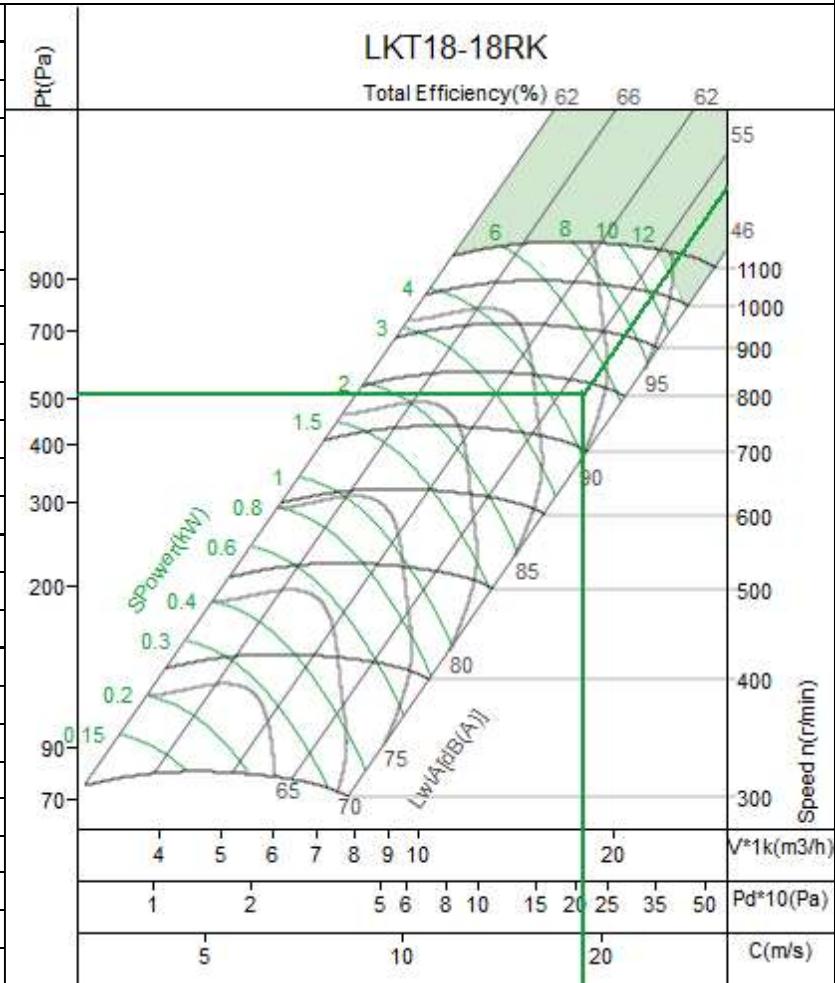


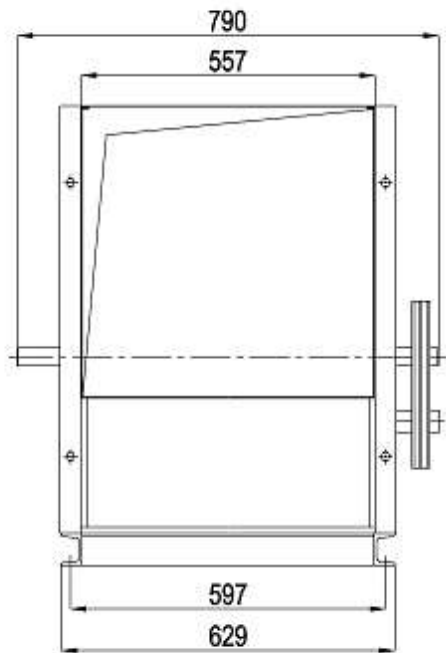
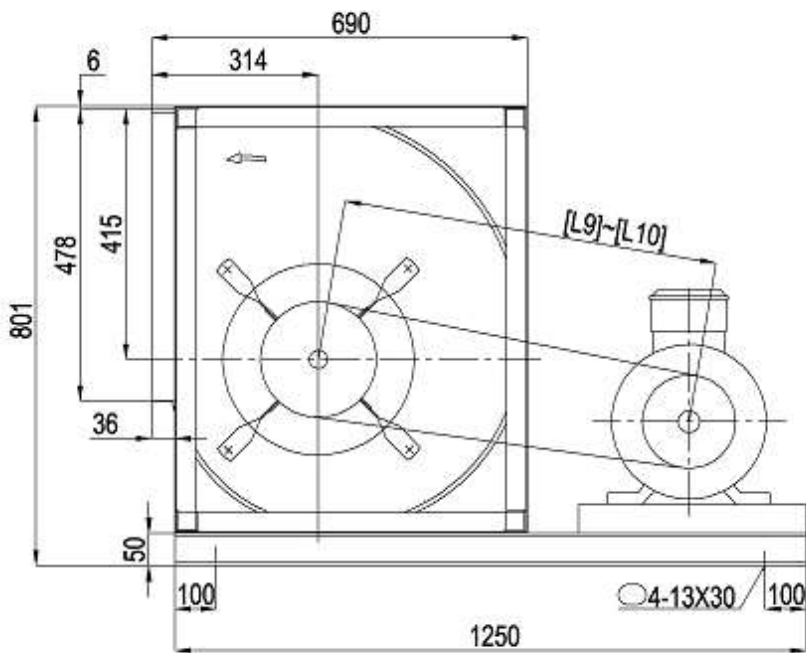


No.:1	Equipment No.:
Project Name:Untitled	
Date:2024-11-18	
Remarks:	

Input Parameters	
Air Volume	17950 m3/h
Input S.P.	300 Pa
Fan Parameters	
Type	LKT18-18RK
Air Volume	17950 m3/h
Total Pressure	510 Pa
Static Pressure	300 Pa
Dynamic Pressure	210 Pa
Outlet Velocity	18.73 m/s
Total Efficiency	52.3 %
Fan Speed	782 r/min
Shaft Power	4.87 kw
Motor Parameters	
Motor Power/Pole	7.5/4
Motor Speed	1460 r/min
Elec Supply V/Ph/Hz	380/3/50
Belt/Pulley	
Fan Pulley/Bush/Shaft	
Motor Pulley/Bush/Shaft	
Belt Model * qty	
Belt Length/Belt Speed	
Bearing life L10/L50 (h)	h
Machine Parameters	
Total Weight	144.1 kg



Limiting Parameters		Noise									
Max. Fan Speed	1100 r/min	HZ	63	125	250	500	1k	2k	4k	8k	Overall
Max. Absorbed Power	12 kw	Lw	84	86	83	87	82	82	78	74	92
Temperature(Min-Max)	-20~85 jæ	Lw(A)	57	70	74	83	82	83	79	73	89
Max. Bearing Load	25600 N	LpA	49	62	66	75	74	75	71	65	81



Fan Section

PRE FILTER



model	Overall dimensions (MM)							
	A	B	C	D	e1	e2	a1	a2
AT 18-18	1400	1200	1500	100	1020	430	560	480

